



ROTAX
NEW AGE KARTING

CUSTOMER INFO 2009 08 25

**Centrifugal Clutch – New needle cage (632415) and O-ring (950815)
125 Junior MAX (Micro MAX and Mini MAX) and 125 MAX**

Mounting guideline for new needle cage and O-ring:

- Remove the clutch drum with sprocket from the engine.
- Clean the starter gear, the clutch and the crankshaft with brake cleaner.

NOTE:

If the old centrifugal clutch is used, all components (fly weights, springs and the 3 bearing studs must be degreased.



- Clean the inside of the clutch drum with brake cleaner.



- Fit the thrust washer, the O-ring and the dry needle cage on the crankshaft.

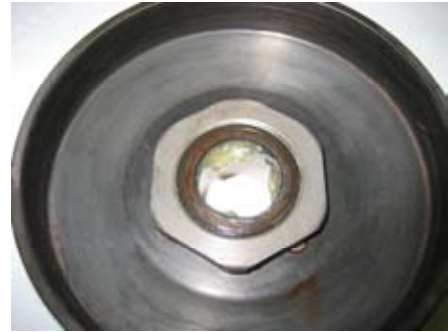


- Apply grease just into the bore of the sprocket.

NOTE:

No grease or oil may be applied to the inside of the clutch drum!

In case a sprocket with 11 teeth is used, the plain bearing may not be lubricated!



- Fit the clutch drum with the sprocket on the crankshaft and remove the excessive grease from the sprocket and crank shaft.



- Mount the thrust washer and hex. nut M10x1 on the crankshaft.

NOTE:

Apply LOCTITE 243 into the thread of the hex nut.
Tightening torque for the hex nut = 35 Nm.



Best regards,

GOROTAX.com

A Division of MRP Motorsport

269.756.9133